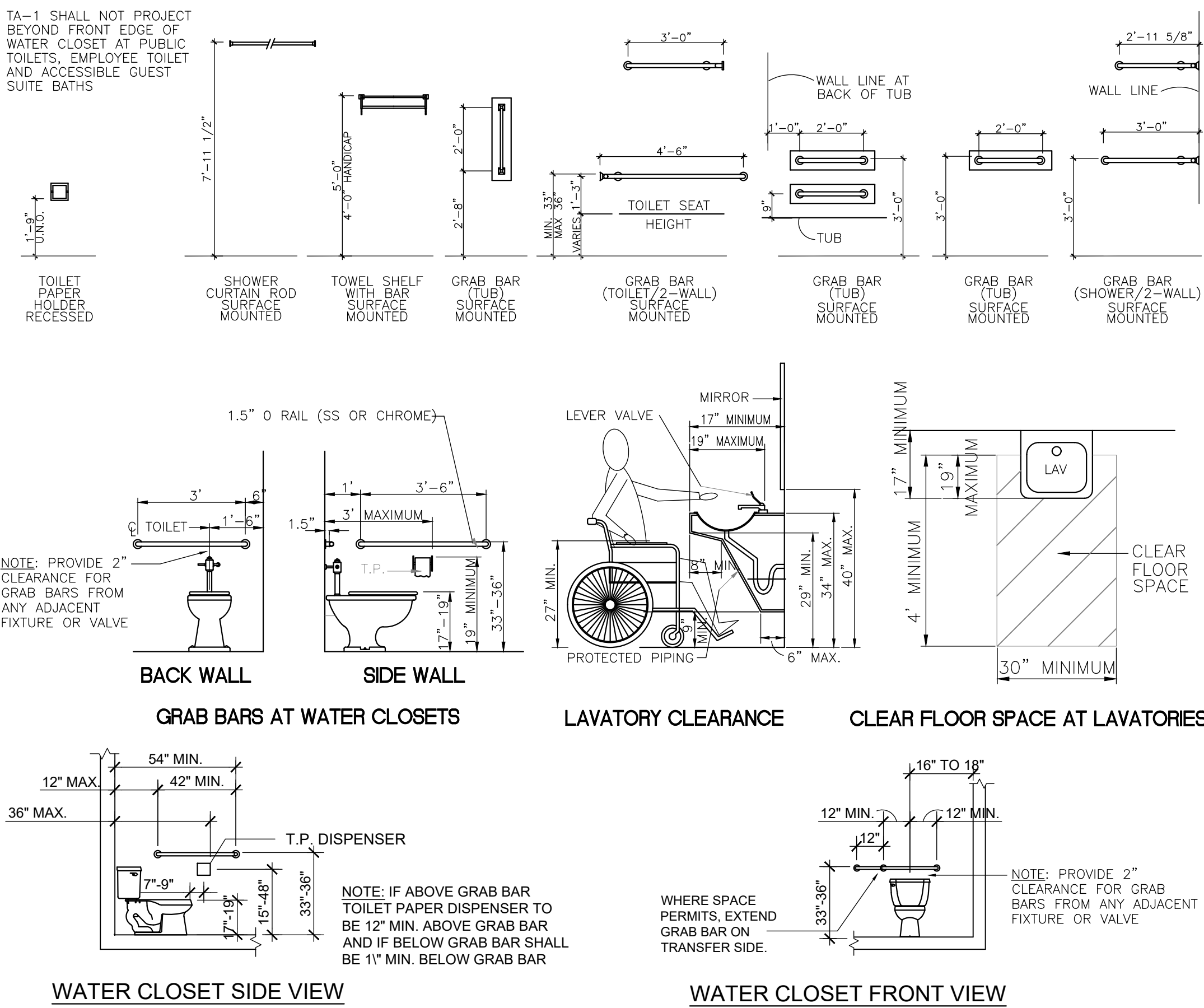
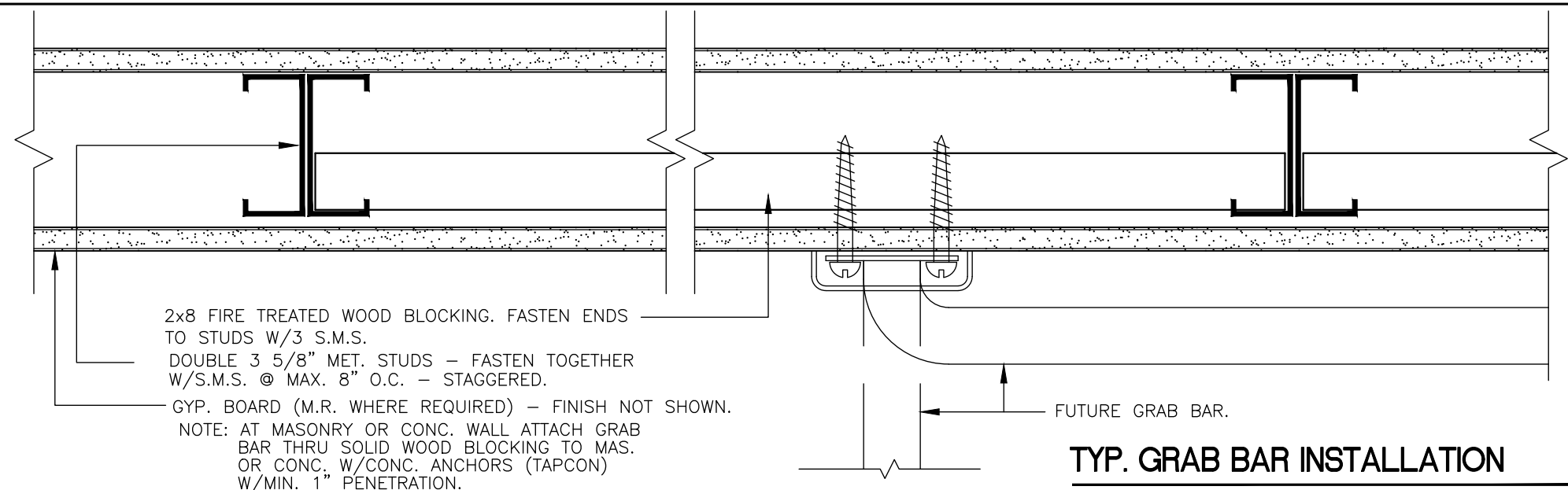
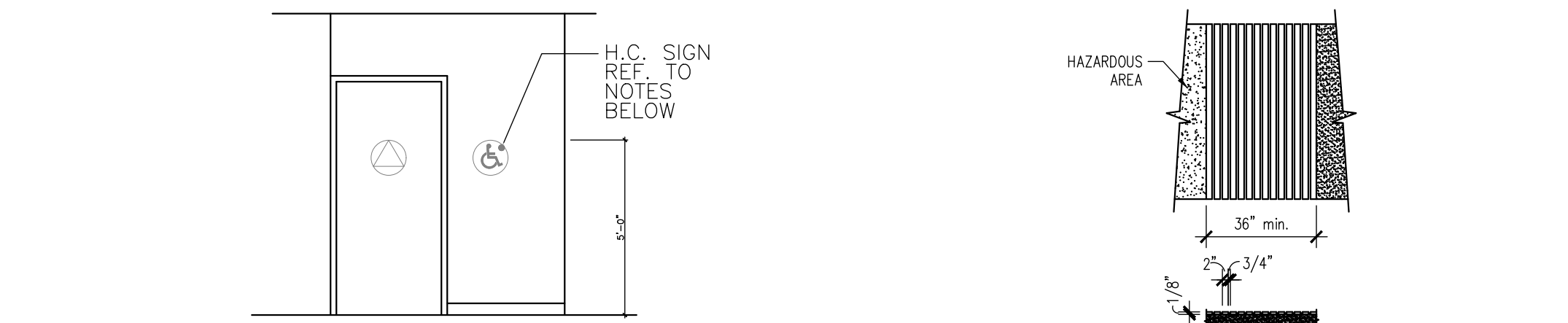


A.D.A. REQUIREMENTS

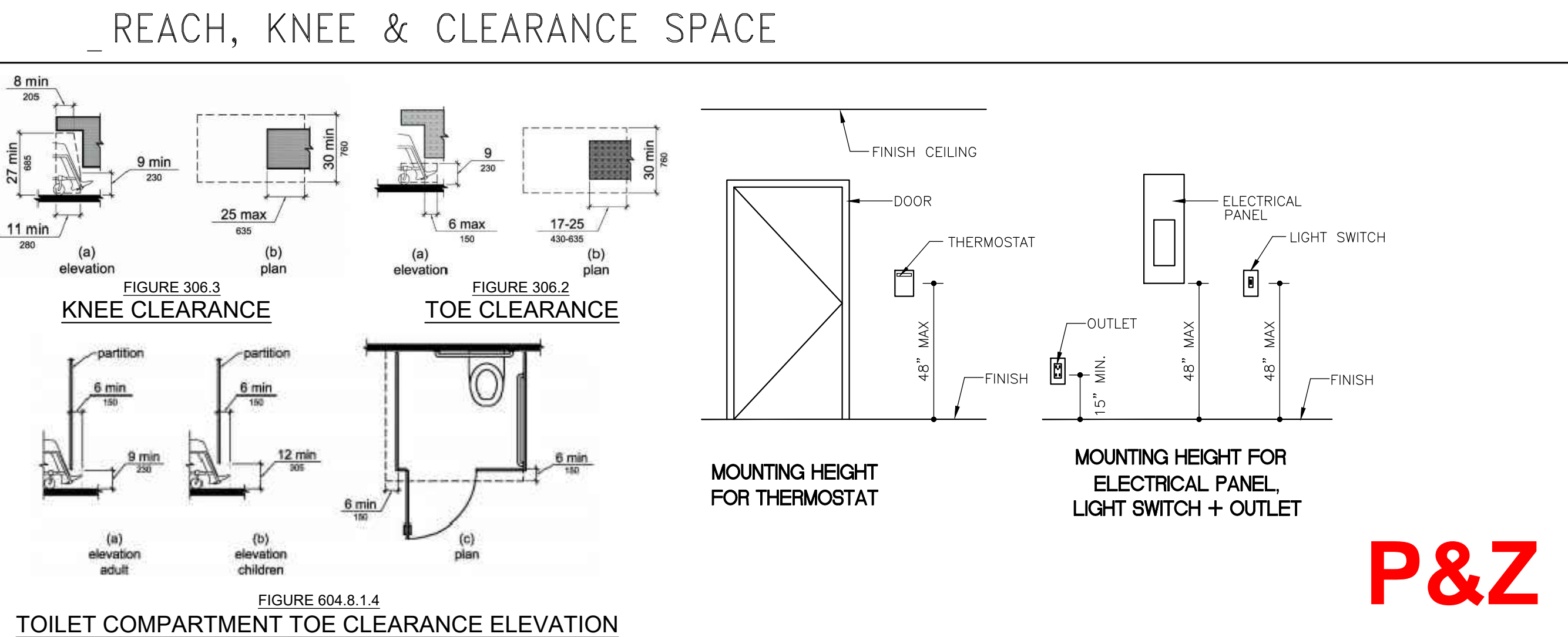
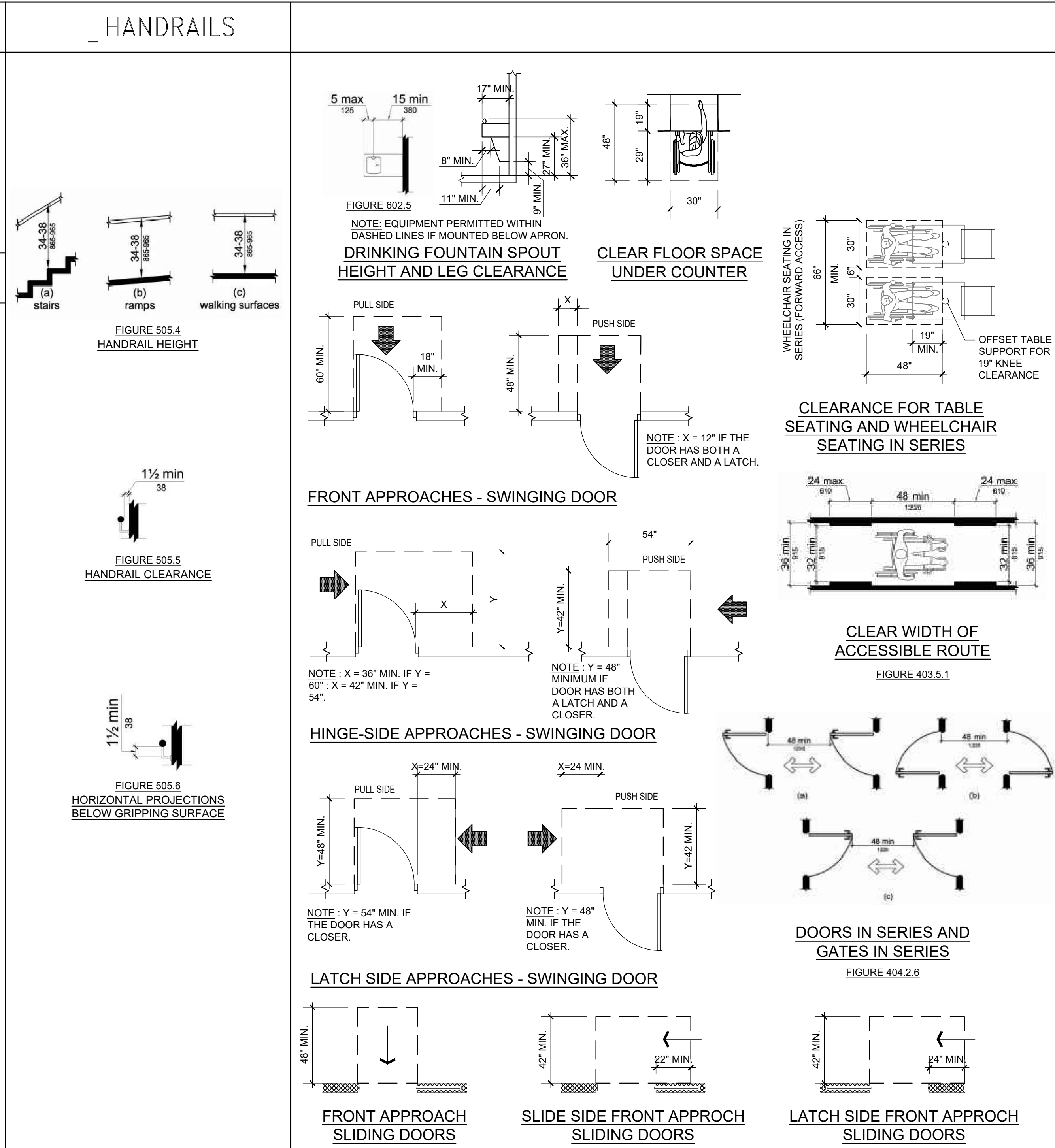
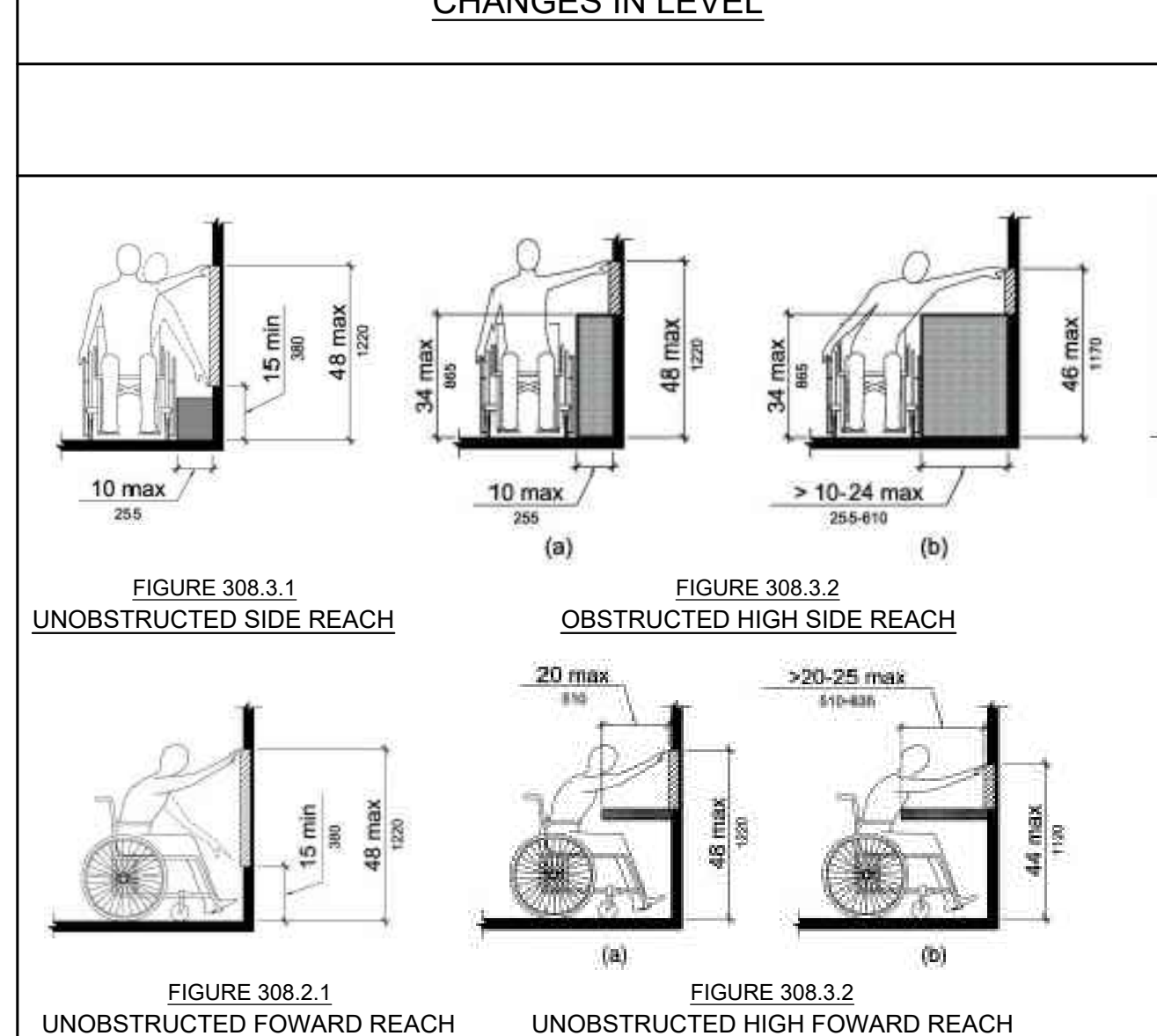
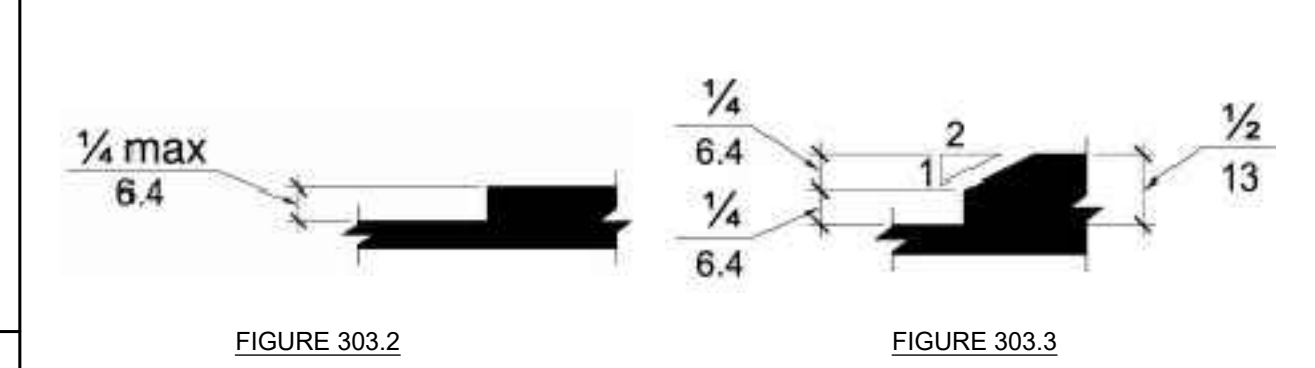
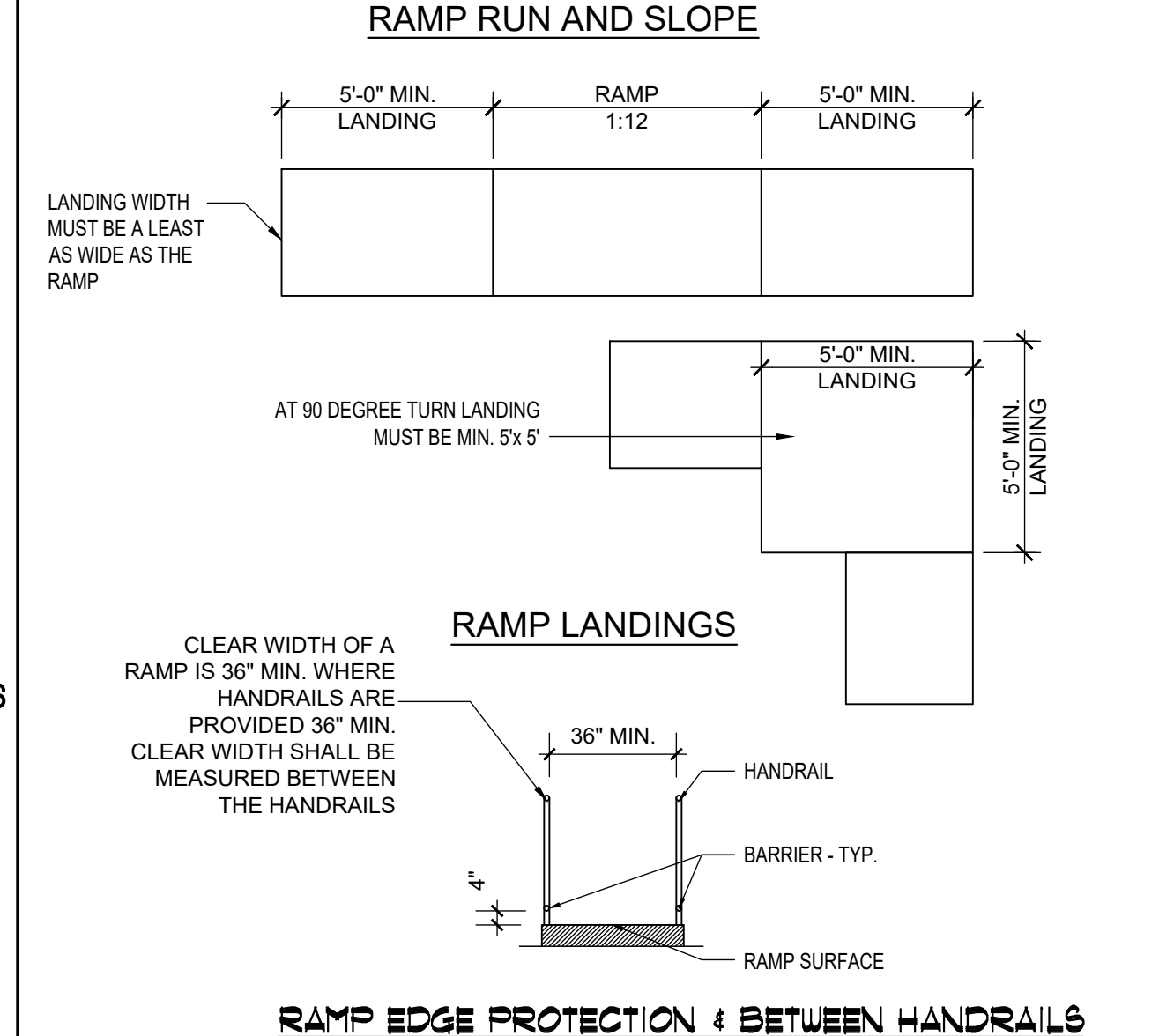
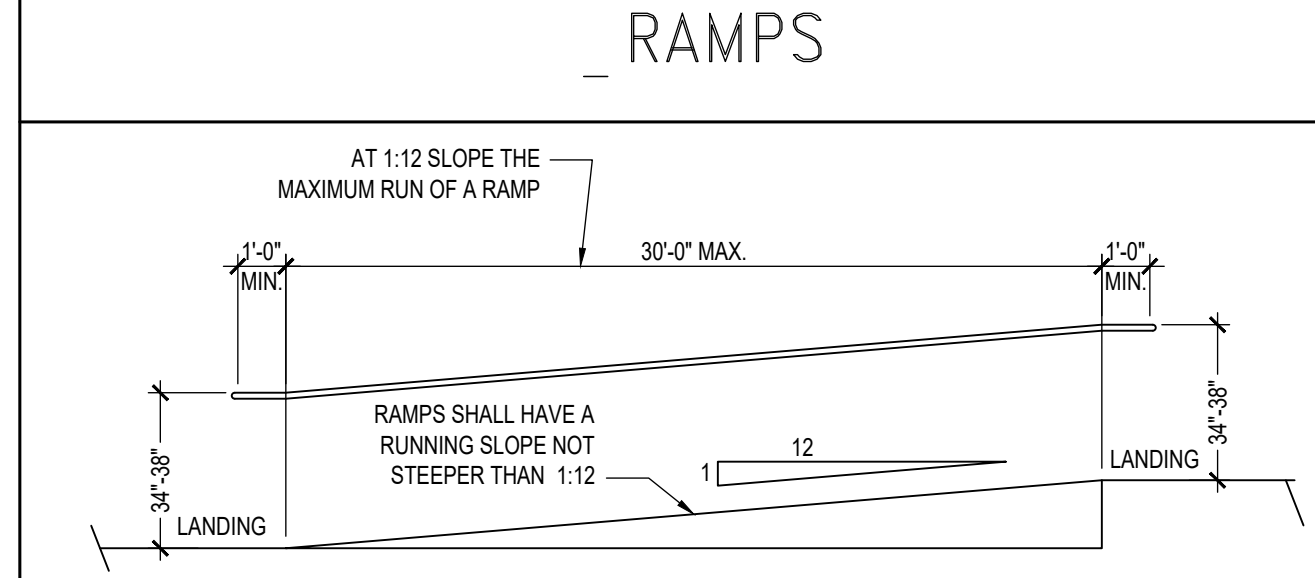
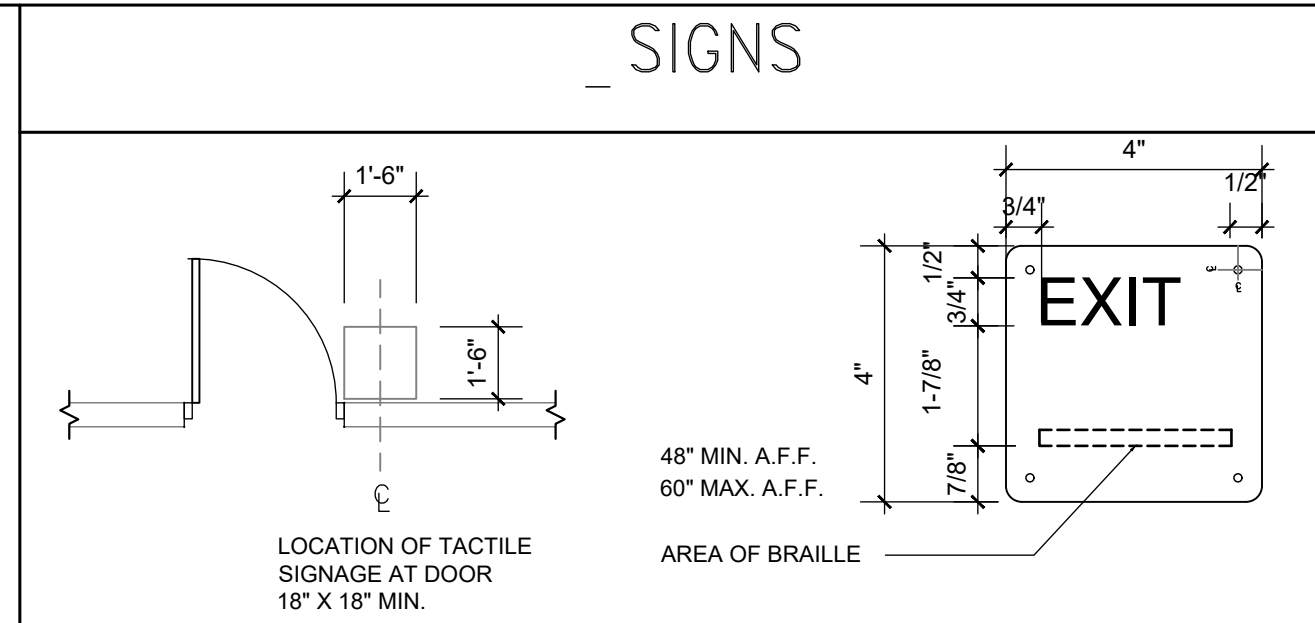
THE ADA ACCESSIBILITY REQUIREMENTS ARE PART OF THE CONSTRUCTION DOCUMENTS FOR THIS PROJECT. THE DRAWINGS ON THIS SHEET ARE SOME, BUT NOT ALL OF THESE REQUIREMENTS, IN THE EVENT OF CONFLICT OR OMISSION BETWEEN THE ARCHITECTS OR ENGINEERS DRAWINGS AND THE ADA'S REQUIREMENTS THE ADA'S WILL TAKE PRIORITY.



PROVIDE F.T. WOOD BLOCKING FOR ALL NECESSARY TOILET ACCESSORIES MOUNTED IN GYP. BD. PARTITIONS REQUIRED FOR THE HANDICAP. MAINTAIN INTEGRITY OF FIRE RATING WHERE ACCESSORIES ARE IN RATED WALLS. WALL HUNG FIXTURES SHALL BE SUPPORTED AS PER FLORIDA BUILDING CODE 2318.1.15 OR 2517.5.1.1.



- DETECTABLE WARNING SURFACE**  
**GENERAL ADA ACCESSIBILITY NOTES:**
1. THE GENERAL CONTRACTOR WILL BE RESPONSIBLE TO ASSURE PROJECT CONFORMANCE WITH REQUIREMENTS REGARDING ACCESS AND FACILITIES FOR THE DISABLED PERSONS INCLUDING, WITHOUT LIMITATION, AND AND TO THE EXTEND APPLICABLE, PART II OF THE FLORIDA BUILDING CONSTRUCTION STANDARDS ACT ENTITLED "ACCESSIBILITY BY HANDICAPPED PERSONS".
  1. RAISED CHARACTERS OR SYMBOLS SHALL CONFORM TO THE FOLLOWING:  
A. LETTERS AND NUMBERS ON THE PERMANENT IDENTIFICATION SIGN SHALL BE RAISED 1/32" MIN. AND SHALL BE SANS-SERIF UPPER CASE CHARACTERS ACCOMPANIED BY GRADE 2 BRAILLE.  
B. RAISED CHARACTERS OR SYMBOLS SHALL BE A MIN. OF " HIGH.  
C. PICTORIAL SYMBOL SIGNS (PICTOGRAMS) SHALL BE ACCOMPANIED BY THE EQUIVALENT VERBAL DESCRIPTION PLACED DIRECTLY BELOW THE PICTOGRAMS. THE BORDER DIMENSION OF THE PICTOGRAM SHALL BE A MIN. OF 6" IN HEIGHT.
  2. CONTRACTED GRADE BRAILLE SHALL BE USED ON THE PERMANENT IDENTIFICATION SIGN. DOTS SHALL BE 1/10" ON CENTERS IN EACH CELL WITH 2/10" SPACE BETWEEN CELLS. DOTS SHALL BE RAISED A MINIMUM OF 1/40" ABOVE THE BACKGROUND.
  3. LETTERS AND NUMBERS ON THE PERMANENT IDENTIFICATION SIGN SHALL HAVE A WIDTH-TO-HEIGHT RATIO OF BETWEEN 3:5 AND 1:1 AND A STROKE WIDTH-TO-HEIGHT RATIO BETWEEN 1:5 AND 1:10.
  4. CHARACTERS AND NUMBERS ON THE PERMANENT IDENTIFICATION SIGN SHALL BE SIZED ACCORDING TO THE VIEWING DISTANCE FROM WHICH THEY ARE TO BE READ, THE MIN. HEIGHT IS MEASURED USING AN UPPER CASE X LOWER CASE CHARACTERS ARE PERMITTED.
  5. CHARACTERS AND SYMBOLS SHALL CONTRAST WITH THEIR BACKGROUND, EITHER LIGHT CHARACTERS ON A DARK BACKGROUND OR DARK CHARACTERS ON A LIGHT BACKGROUND.



REVISIONS

- 1.
- 2.
- 3.
- 4.
- 5.
- 6.
- 7.
- 8.
- 9.
- 10.

ALL IDEAS, DESIGN, ARRANGEMENTS, AND PLANS INDICATED OR REPRESENTED BY THIS DRAWING ARE OWNED BY AND PROPERTY OF THE ARCHITECT, AND WILL BE CREATED, ENVELOPED, AND DEVELOPED FOR USE ONLY AND IN CONNECTION WITH THE SPECIFIED PROJECT. NONE OF SUCH IDEAS, DESIGN, ARRANGEMENTS, AND PLANS SHALL BE USED BY OR DISCLOSED TO ANY PERSON, FIRM, OR CORPORATION FOR ANY PURPOSE WITHOUT WRITTEN PERMISSION OF RWB LINARES ARCHITECTURE, INC.

FLORIDA INDOOR TENNIS  
POMPAHO BEACH, FL 33069

3000 NORTH MILITARY TRAIL, SUITE 209  
BOCA RATON, FLORIDA 33431  
PHONE 561-391-0081 FAX 561-391-0085  
EMAIL mail@rwb-arch.com

RWB  
Linare  
ARCHITECTURE

PROJECT # 21-035  
DATE PER ISSUANCE  
SHEET #

A0.02  
JUAN C. LINARES

P&Z

P223-12000009

03/05/2025